



Glasbheal Loch Rí

Lough Ree Greenway

(Athlone to Ballyleague / Lanesborough / Roscommon Town)

Public Consultation No. 2

Greenway Overview

The Strategy for the Future Development of National and Regional Greenways document from the Department of Transport, Tourism and Sport (DTTaS) defines a greenway as a recreational or pedestrian corridor for non-motorised journeys, developed in an integrated manner which enhances both the environment and quality of life of the surrounding area. These routes should meet satisfactory standards of width, gradient and surface condition to ensure that they are both user-friendly and low-risk for users of all abilities.

Project Summary

The Lough Ree Greenway linking Athlone to Ballyleague / Lanesborough and Roscommon Town, will have a width of 6 to 10m, with a 3m wide paved surface and is expected to extend over approximate 70km.

Route Corridor Options were developed to:

- Link **key locations** and tourist sites along its route,
- Link to existing **boglands** and **peatways** to increase the offering of things to see and do,
- Link to existing **Blueways** and aim to offer opportunity for further extension of Blueway's by linking active travel infrastructure along the western shoreline of Lough Ree,
- Be **fully** accessible,
- Provide **linkages** and **connectivity** to other greenway routes,
- Encompass **key amenities and scenic locations** along the route,
- Provide a **commuting route** for non-motorised vehicles adjacent to urban areas,
- Provide for **safe and secure** local access to schools, sports facilities and other amenities along its route.



Tionscadal Éireann
Project Ireland
2040



Comhairle Contae
Ros Comáin
Roscommon
County Council



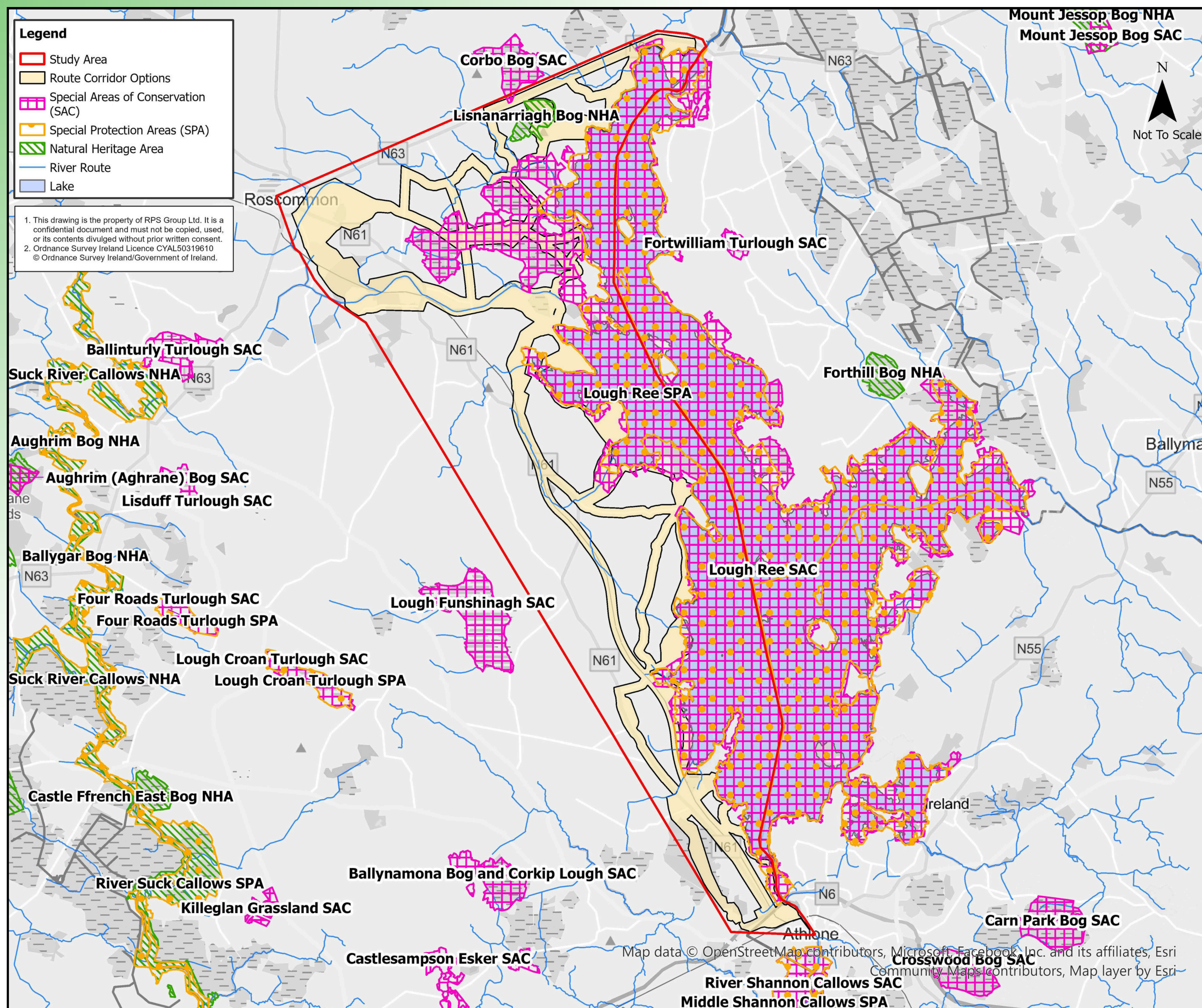


Lough Ree Greenway

(Athlone to Ballyleague / Lanesborough / Roscommon Town)

Public Consultation No. 2

Environmental Constraints Map



**Comhairle Contae
Ros Comáin**
Roscommon
County Council





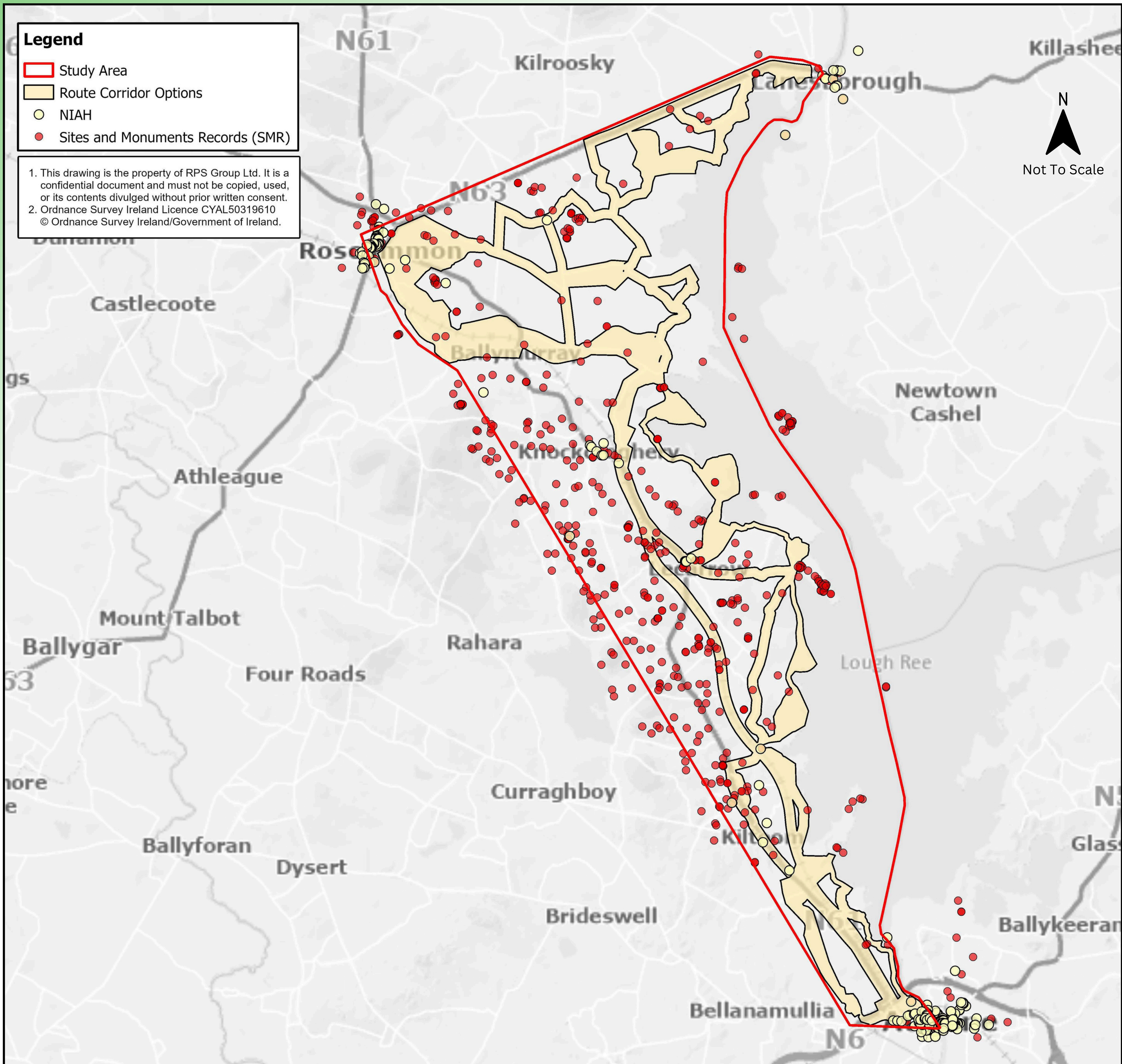
Glasbheal Loch Rí

Lough Ree Greenway

(Athlone to Ballyleague / Lanesborough / Roscommon Town)

Public Consultation No. 2

Archaeological and Architectural Constraints



Tionscadal Éireann
Project Ireland
2040





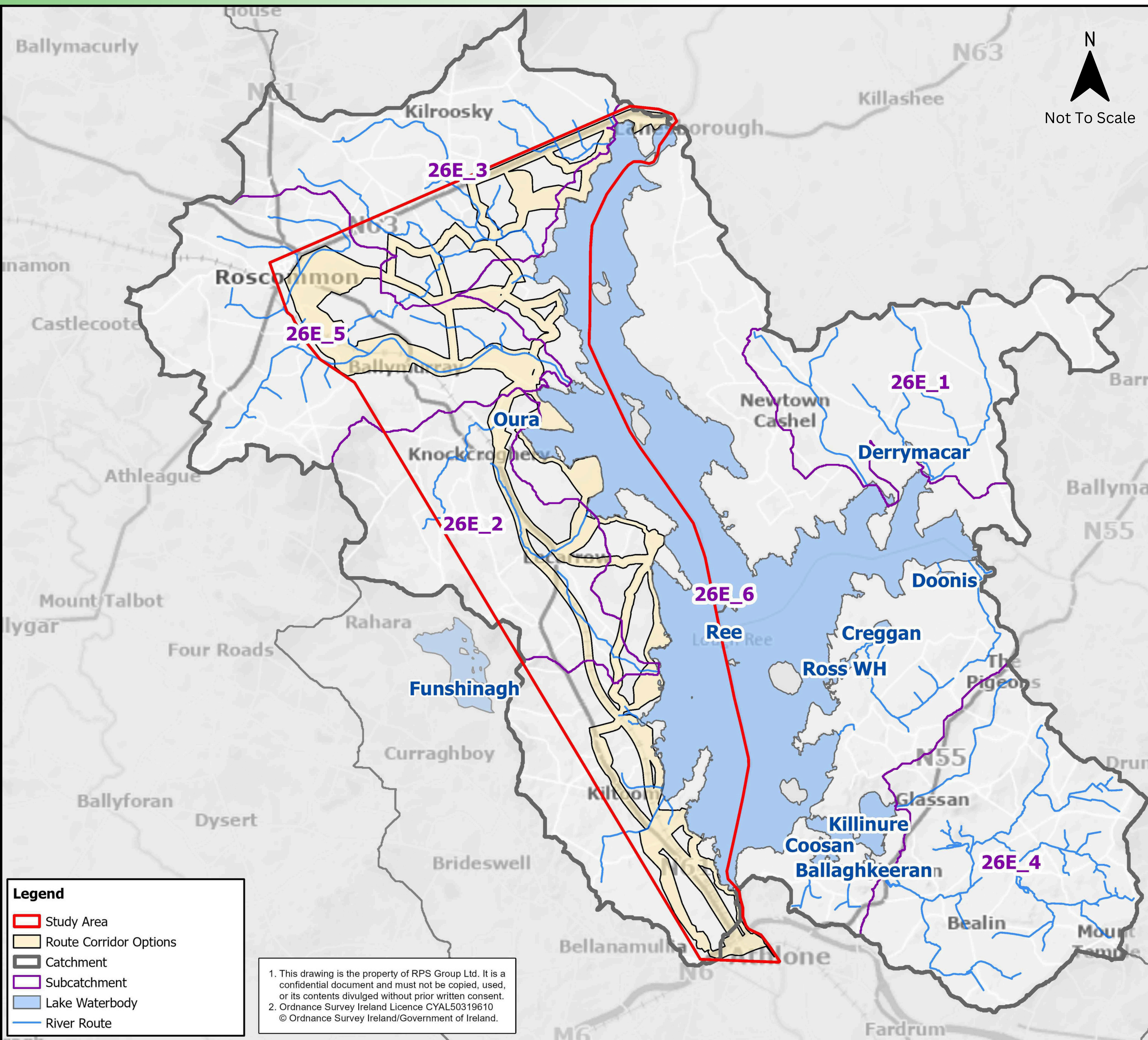
Glasbheal Loch Rí

Lough Ree Greenway

(Athlone to Ballyleague / Lanesborough / Roscommon Town)

Public Consultation No. 2

Hydrological/ Hydrogeological Constraints



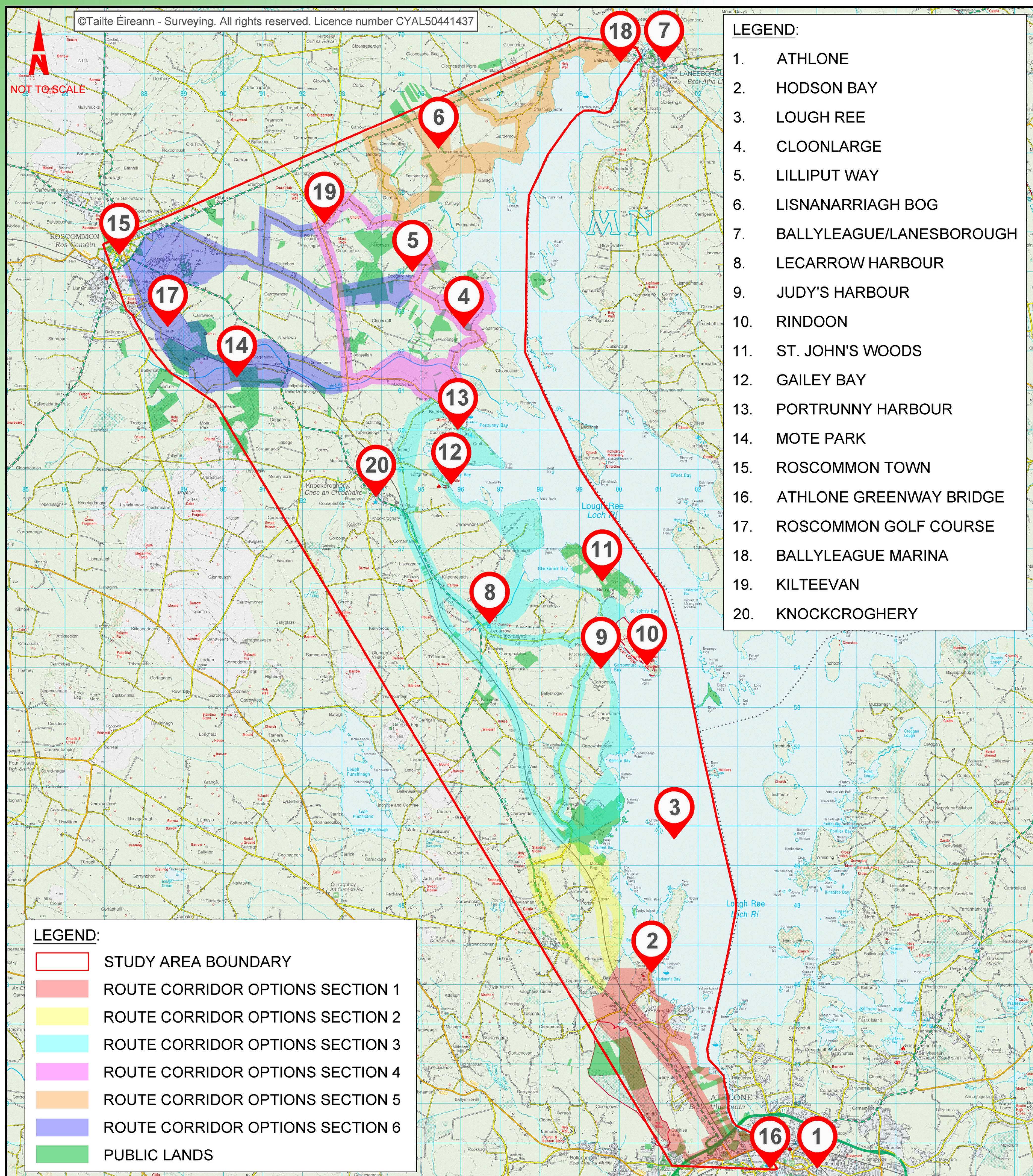
Tionscadal Éireann
Project Ireland
2040



Comhairle Contae
Ros Comáin
Roscommon
County Council



Locations of Interest





Glasbheal Loch Rí

Lough Ree Greenway

(Athlone to Ballyleague / Lanesborough / Roscommon Town)

Public Consultation No. 2

Introduction

Roscommon County Council, in partnership with Westmeath County Council is currently in the early stages of developing a greenway linking Athlone, Ballyleague and Roscommon Town. This project is funded through Transport Infrastructure Ireland (TII).

As part of Public Consultation No. 2 and in accordance with the Code of Best Practice National and Regional Greenways, members of the public and interested parties are invited to participate in the public consultation phase. The purpose of the second public consultation is to present the Route Corridor Options and hear your feedback.

We want to hear your views on the following:

- Potential routes that could be considered.
- Any potential constraints known to you.
- Locations, attractions, or facilities in your locality that could be attractive to, or benefit from a greenway.
- Scenic and/or heritage features in your area.
- Environmental / Biodiversity features you wish to highlight to the project.



Information on the project will be on display at:

Public Consultation Venue	Date	Time
Hodson Bay Hotel, Athlone, Co. Roscommon, N37 XR82	Tuesday 11th March 2025	3pm to 8pm

Have Your Say

A feedback form to provide feedback to the project team is included in the brochure, through our website www.loughreegreenway.ie or by using the QR code.

Closing date for submissions is **Wednesday 2th April 2025.**

Email: info@loughreegreenway.ie

Post: Greenways Team, National Roads Regional Office, Racecourse Road, Roscommon F42 WY23



Tionscadal Éireann
Project Ireland
2040





Glasbheal Loch Rí

Lough Ree Greenway

(Athlone to Ballyleague / Lanesborough / Roscommon Town)

Public Consultation No. 2

Who can get Involved

Property owners and people who own land along the route, the farming community, local B&B's, hotels and hostels and recreational sites and businesses all have an important role in its success.

Local businesses such as shops, pubs, cafes and supply stores all stand to benefit from the opportunities that come with increased visitor numbers.

Community groups and interests are vital to the creation of new ideas and helping tourism information centres and services.



**Online
Feedback
Form**



Tionscadal Éireann
Project Ireland
2040



Comhairle Contae
Ros Comáin
Roscommon
County Council





Glasbheal Loch Rí Lough Ree Greenway

(Athlone to Ballyleague / Lanesborough / Roscommon Town)

Public Consultation No. 2

Greenway Process

Code of Best Practice
National and Regional
Greenways - December 2021



A Code of Best Practice for
National and Regional
Greenways is available
through the QR code.



Greenway Strategy

Strategy for the Future Development of
National and Regional Greenways - July 2018



An objective of the Government's Strategy for the Future Development of National and Regional Greenways (2018) is to have greenways constructed to an appropriate standard in order to deliver a quality experience for all greenway users.

Consultation

Public consultation will be held on the proposed greenway to inform the public and discuss the project before it is submitted to An Bord Pleanála

Public Consultation No. 1

Study Area & Constraints - 22nd March 2023

Public Consultation No. 2

Route Corridor Options - 11th March 2025

Public Consultation No. 3

Preferred Route Corridor - Date TBC

Landowner Consultation

Consultations with Individual Landowners -
Date TBC



Tionscadal Éireann
Project Ireland
2040



Comhairle Contae
Ros Comáin
Roscommon
County Council

