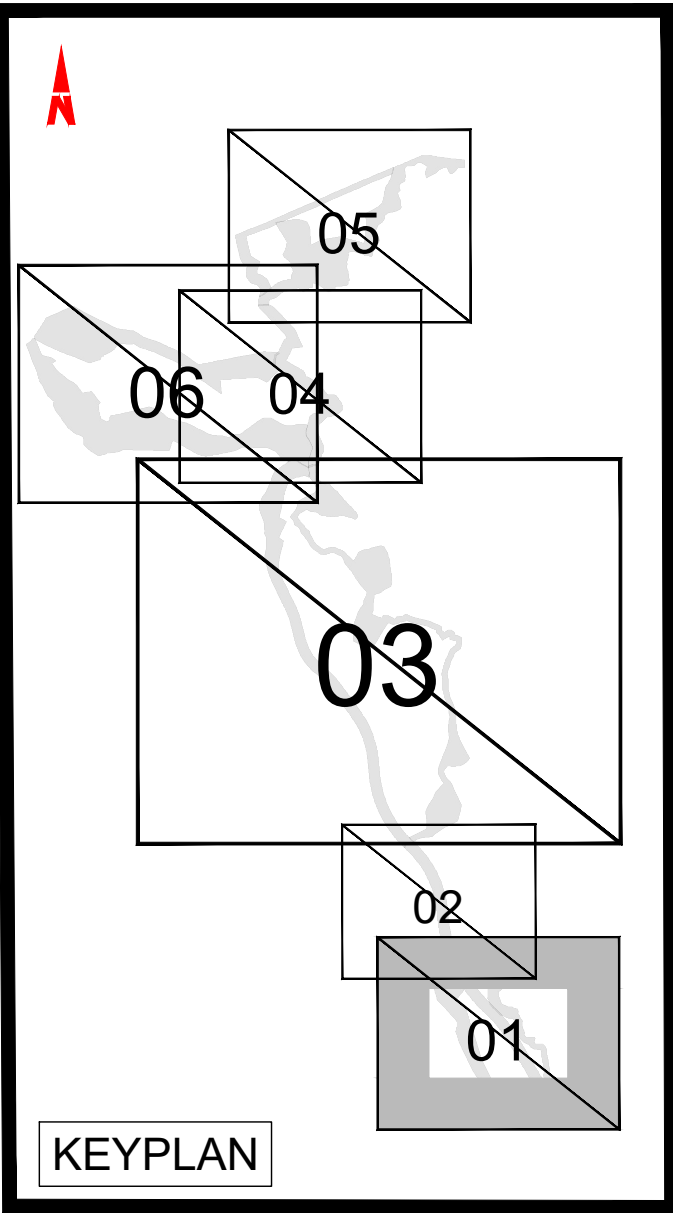


- General Notes
- (i) Hard copies, dwf and pdf will form a controlled issue of the drawing. All other formats (dwg etc.) are deemed to be an uncontrolled issue and any work carried out based on these files is at the recipients own risk. RPS will not accept any responsibility for any errors from the use of these files, either by human error by the recipient, listing of the un-dimensioned measurements, compatibility with the recipients software, and any errors arising when these files are used to aid the recipients drawing production, or setting out on site.
 - (ii) DO NOT SCALE, use figured dimensions only.
 - (iii) This drawing is the property of RPS, it is a project confidential classified document. It must not be copied used or its contents divulged without prior written consent. The needs and expectations of client and RPS must be considered when working with this drawing.
 - (iv) Information including topographical survey, geotechnical investigation and utility detail used in the design have been provided by others.
 - (v) All Levels refer to Ordnance Survey Datum, Malin Head.



P02	04.03.25	IF	FOR REVIEW AND COMMENT	AW	
P01	24.02.25	MC	FOR REVIEW AND COMMENT	AW	
Rev	Date	Drn	Amendment / Issue	App	

Client



TII
Bonneagar Ionpair Éireann
Transport Infrastructure Ireland



RPS
Ros Comáin
Roscommon
County Council



RPS
A TETRA TECH COMPANY

Project LOUGH REE GREENWAY
(ATHLONE TO BALLYLEAGUE /
LANESBOROUGH / ROSCOMMON TOWN)

Title ROUTE CORRIDOR OPTIONS
SECTIONS

Model File Identifier

File Identifier
IE000085-RPS-SK-XX-M2-CE-0001-01

Created on FEBRUARY 2025	Sheets 1 OF 6	
Scale NTS @ A1 NTS @ A3	Status S3	Rev P02

LEGEND:

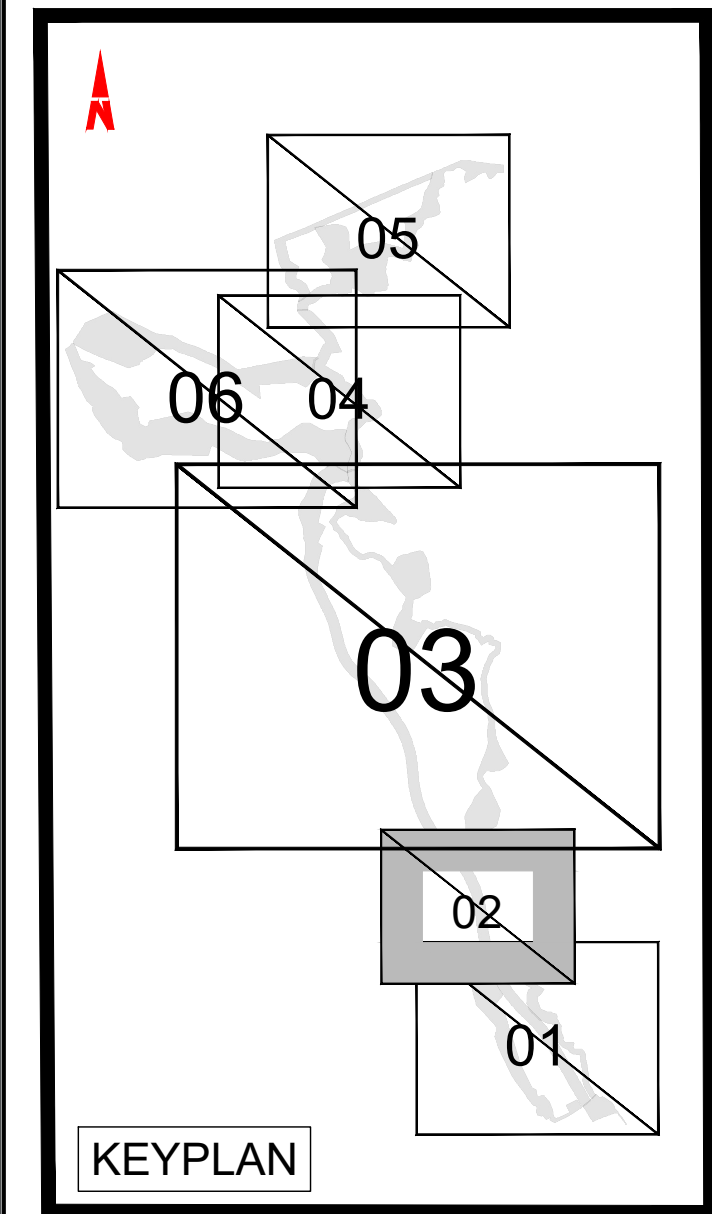
- STUDY AREA BOUNDARY
- ROUTE CORRIDOR OPTIONS SECTION 1
- ROUTE CORRIDOR OPTIONS SECTION 2
- ROUTE CORRIDOR OPTIONS SECTION 3
- ROUTE CORRIDOR OPTIONS SECTION 4
- ROUTE CORRIDOR OPTIONS SECTION 5
- ROUTE CORRIDOR OPTIONS SECTION 6



LEGEND:

- STUDY AREA BOUNDARY
- ROUTE CORRIDOR OPTIONS SECTION 1
- ROUTE CORRIDOR OPTIONS SECTION 2
- ROUTE CORRIDOR OPTIONS SECTION 3
- ROUTE CORRIDOR OPTIONS SECTION 4
- ROUTE CORRIDOR OPTIONS SECTION 5
- ROUTE CORRIDOR OPTIONS SECTION 6

- General Notes
- (i) Hard copies, dwf and pdf will form a controlled issue of the drawing. All other formats (dwg etc.) are deemed to be an uncontrolled issue and any work carried out based on these files is at the recipients own risk. RPS will not accept any responsibility for any errors from the use of these files, either by human error by the recipient, listing of the un-dimensioned measurements, compatibility with the recipients software, and any errors arising when these files are used to aid the recipients drawing production, or setting out on site.
 - (ii) DO NOT SCALE, use figured dimensions only.
 - (iii) This drawing is the property of RPS, it is a project confidential classified document. It must not be copied used or its contents divulged without prior written consent. The needs and expectations of client and RPS must be considered when working with this drawing.
 - (iv) Information including topographical survey, geotechnical investigation and utility detail used in the design have been provided by others.
 - (v) All Levels refer to Ordnance Survey Datum, Malin Head.



P02	04.03.25	IF	FOR REVIEW AND COMMENT	AW	
P01	24.02.25	MC	FOR REVIEW AND COMMENT	AW	
Rev	Date	Dm CHK	Amendment / Issue	App	

Client



Comhairle Contae Ros Comáin
Roscommon County Council



Project LOUGH REE GREENWAY
(ATHLONE TO BALLYLEAGUE / LANESBOROUGH / ROSCOMMON TOWN)

Title ROUTE CORRIDOR OPTIONS SECTIONS

Model File Identifier

File Identifier
IE000085-RPS-SK-XX-M2-CE-0001-02

Created on FEBRUARY 2025	Sheets 2 OF 6	Status S3	Rev P02
-----------------------------	------------------	--------------	------------



General Notes

(i) Hard copies, dwf and pdf will form a controlled issue of the drawing. All other formats (dwg etc.) are deemed to be an uncontrolled issue and any work carried out based on these files is at the recipients own risk. RPS will not accept any responsibility for any errors from the use of these files, either by human error by the recipient, listing of the un-dimensioned measurements, compatibility with the recipients software, and any errors arising when these files are used to aid the recipients drawing production, or setting out on site.

(ii) DO NOT SCALE, use figured dimensions only.

(iii) This drawing is the property of RPS, it is a project confidential classified document. It must not be copied used or its contents divulged without prior written consent. The needs and expectations of client and RPS must be considered when working with this drawing.

(iv) Information including topographical survey, geotechnical investigation and utility detail used in the design have been provided by others.

(v) All Levels refer to Ordnance Survey Datum, Malin Head.

KEYPLAN

P02	04.03.25	IF MC	FOR REVIEW AND COMMENT	AW	
P01	24.02.25	MC MC	FOR REVIEW AND COMMENT	AW	
Rev	Date	Dm CHK	Amendment / Issue	App	

Client

Comhairle Contae Ros Comáin Roscommon County Council

A TETRA TECH COMPANY

Project

LOUGH REE GREENWAY (ATHLONE TO BALLYLEAGUE / LANESBOROUGH / ROSCOMMON TOWN)

Title

ROUTE CORRIDOR OPTIONS SECTIONS

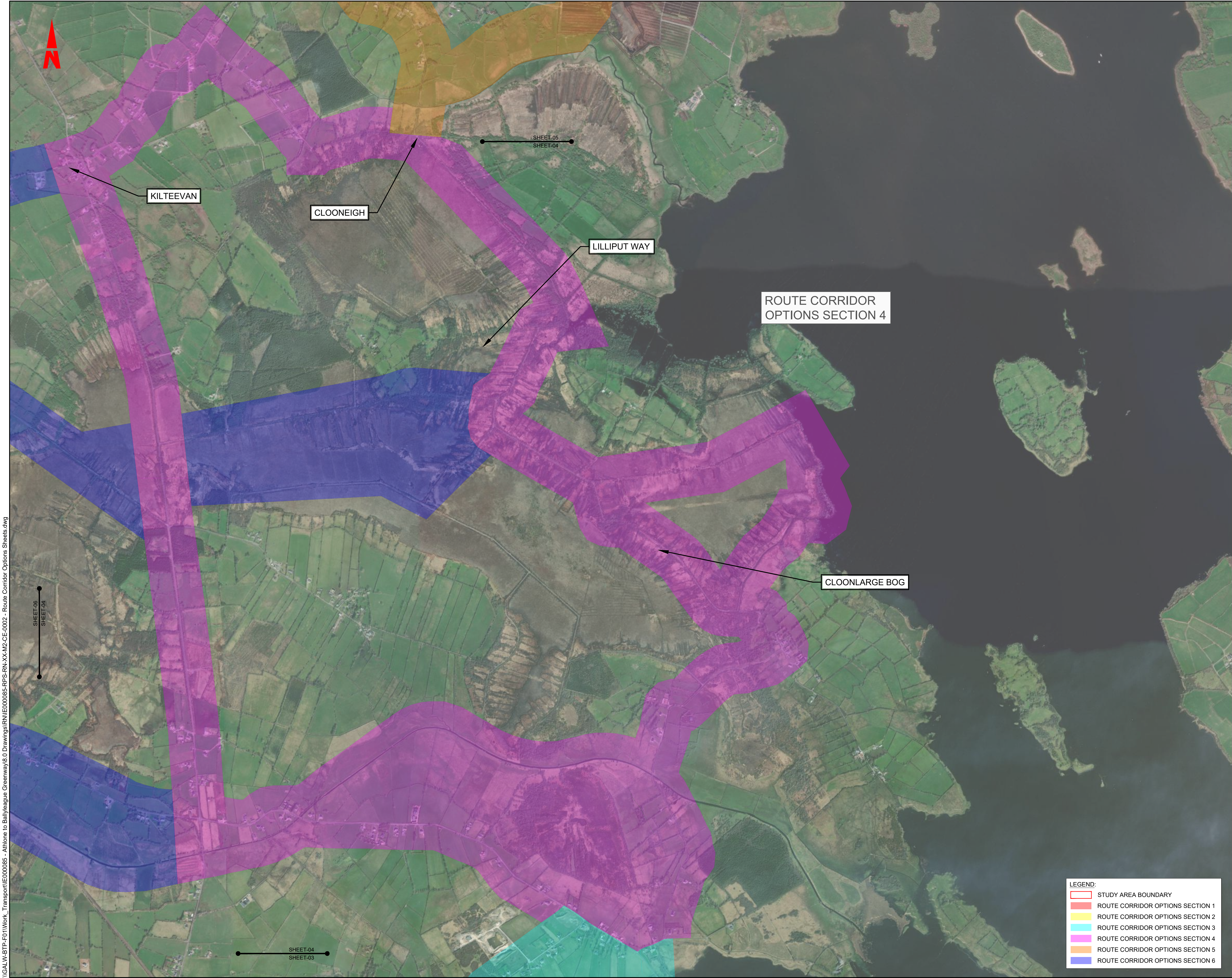
Model File Identifier

File Identifier

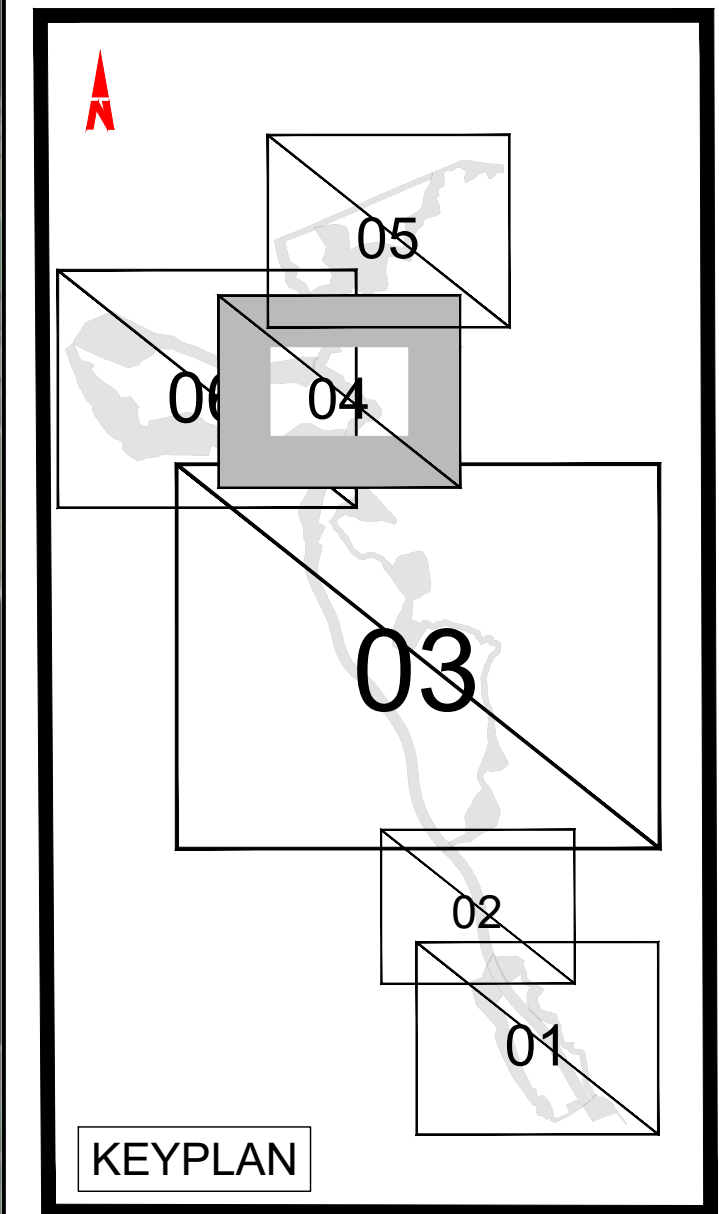
IE000085-RPS-SK-XX-M2-CE-0001-03

Created on	Sheets	
FEBRUARY 2025	3 OF 6	
Scale	Status	Rev
NTS @ A1 NTS @ A3	S3	P02

\\GALW-BTP-F01\\Work_Transport\\IE000085 - Athlone to Ballyleague Greenway\\8.0 Drawings\\RNI\\IE000085-RPS-RN-XX-M2-CE-0002 - Route Corridor Options Sheets.dwg



- General Notes
- (i) Hard copies, dwf and pdf will form a controlled issue of the drawing. All other formats (dwg etc.) are deemed to be an uncontrolled issue and any work carried out based on these files is at the recipients own risk. RPS will not accept any responsibility for any errors from the use of these files, either by human error by the recipient, listing of the un-dimensioned measurements, compatibility with the recipients software, and any errors arising when these files are used to aid the recipients drawing production, or setting out on site.
 - (ii) DO NOT SCALE, use figured dimensions only.
 - (iii) This drawing is the property of RPS, it is a project confidential classified document. It must not be copied used or its contents divulged without prior written consent. The needs and expectations of client and RPS must be considered when working with this drawing.
 - (iv) Information including topographical survey, geotechnical investigation and utility detail used in the design have been provided by others.
 - (v) All Levels refer to Ordnance Survey Datum, Malin Head.



Rev	Date	Chk	App	Amendment / Issue
P02	04.03.25	IF MC		FOR REVIEW AND COMMENT
P01	24.02.25	DM MC		FOR REVIEW AND COMMENT

Client



Bonneagar Ionpair Éireann
Transport Infrastructure Ireland

Comhairle Contae Ros Comáin
Roscommon County Council



Project LOUGH REE GREENWAY (ATHLONE TO BALLYLEAGUE / LANESBOROUGH / ROSCOMMON TOWN)

Title ROUTE CORRIDOR OPTIONS SECTIONS

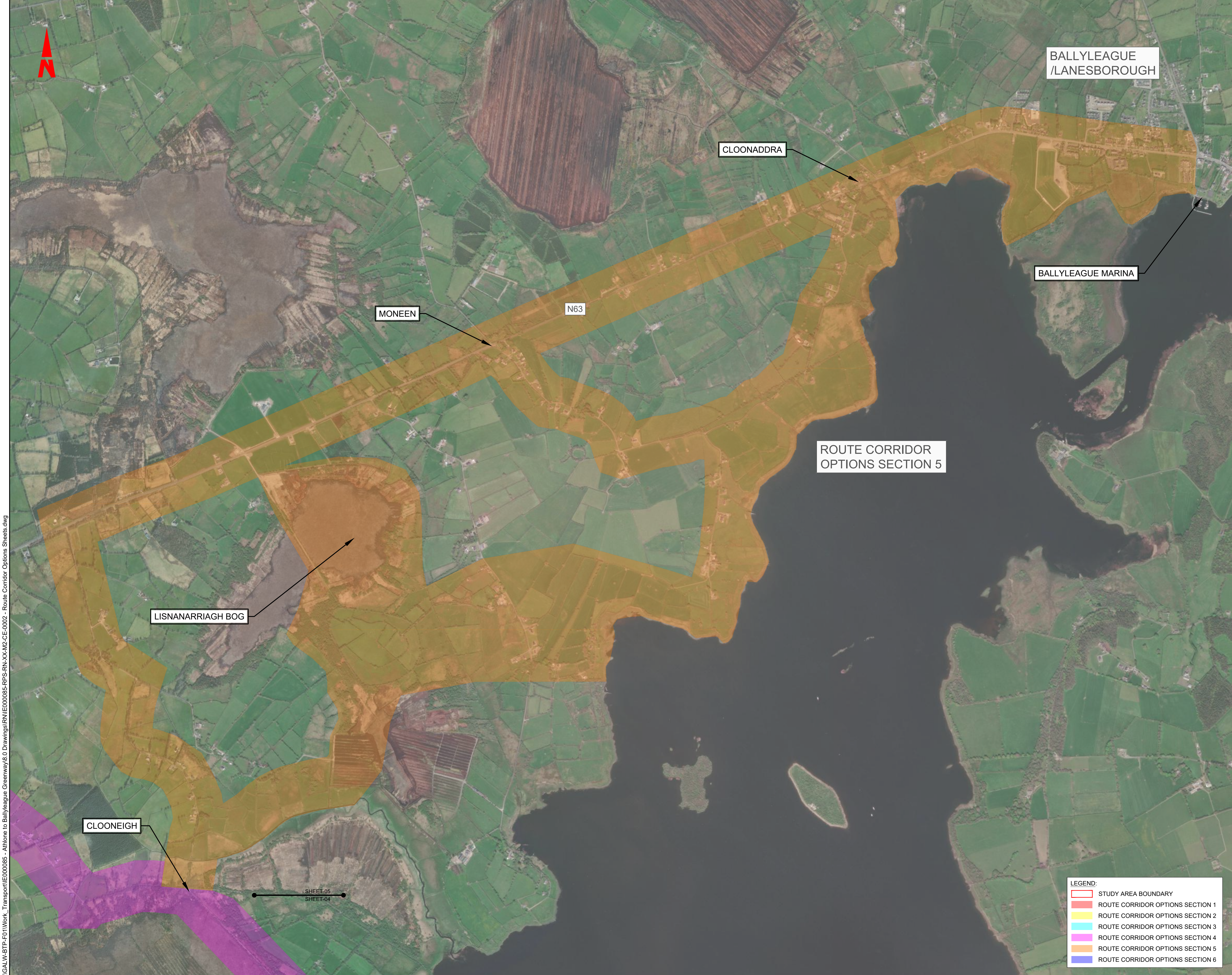
Model File Identifier

File Identifier IE000085-RPS-SK-XX-M2-CE-0001-04

Created on FEBRUARY 2025	Sheets 4 OF 6
--------------------------	---------------

Scale NTS @ A1 NTS @ A3	Status S3	Rev P02
----------------------------	-----------	---------

- LEGEND:
- STUDY AREA BOUNDARY
 - ROUTE CORRIDOR OPTIONS SECTION 1
 - ROUTE CORRIDOR OPTIONS SECTION 2
 - ROUTE CORRIDOR OPTIONS SECTION 3
 - ROUTE CORRIDOR OPTIONS SECTION 4
 - ROUTE CORRIDOR OPTIONS SECTION 5
 - ROUTE CORRIDOR OPTIONS SECTION 6



General Notes

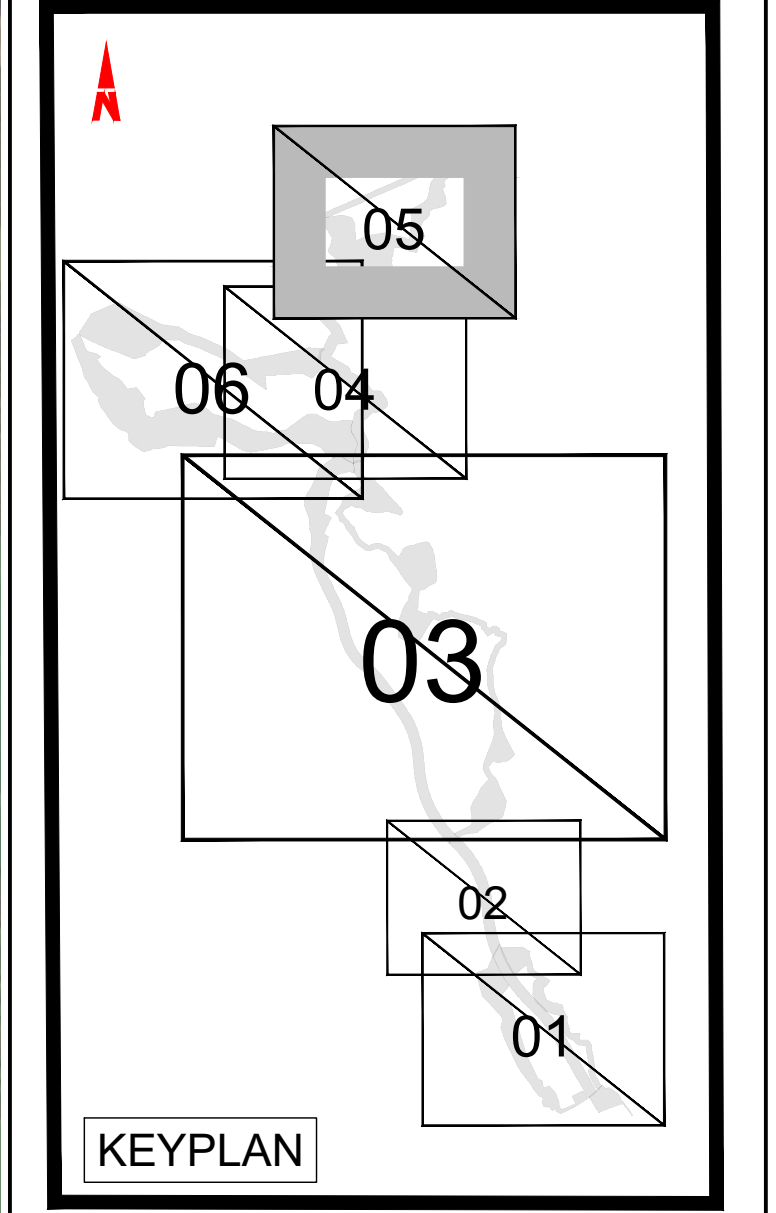
(i) Hard copies, dwf and pdf will form a controlled issue of the drawing. All other formats (dwg etc.) are deemed to be an uncontrolled issue and any work carried out based on these files is at the recipients own risk. RPS will not accept any responsibility for any errors from the use of these files, either by human error by the recipient, listing of the un-dimensioned measurements, compatibility with the recipients software, and any errors arising when these files are used to aid the recipients drawing production, or setting out on site.

(ii) DO NOT SCALE, use figured dimensions only.

(iii) This drawing is the property of RPS, it is a project confidential classified document. It must not be copied used or its contents divulged without prior written consent. The needs and expectations of client and RPS must be considered when working with this drawing.

(iv) Information including topographical survey, geotechnical investigation and utility detail used in the design have been provided by others.

(v) All Levels refer to Ordnance Survey Datum, Malin Head.



P02	04.03.25	IF MC	FOR REVIEW AND COMMENT	AW
P01	24.02.25	MC MC	FOR REVIEW AND COMMENT	AW
Rev	Date	Dwn Ck	Amendment / Issue	App

Client



Comhairle Contae Ros Comáin
Roscommon County Council



Project LOUGH REE GREENWAY (ATHLONE TO BALLYLEAGUE / LANESBOROUGH / ROSCOMMON TOWN)

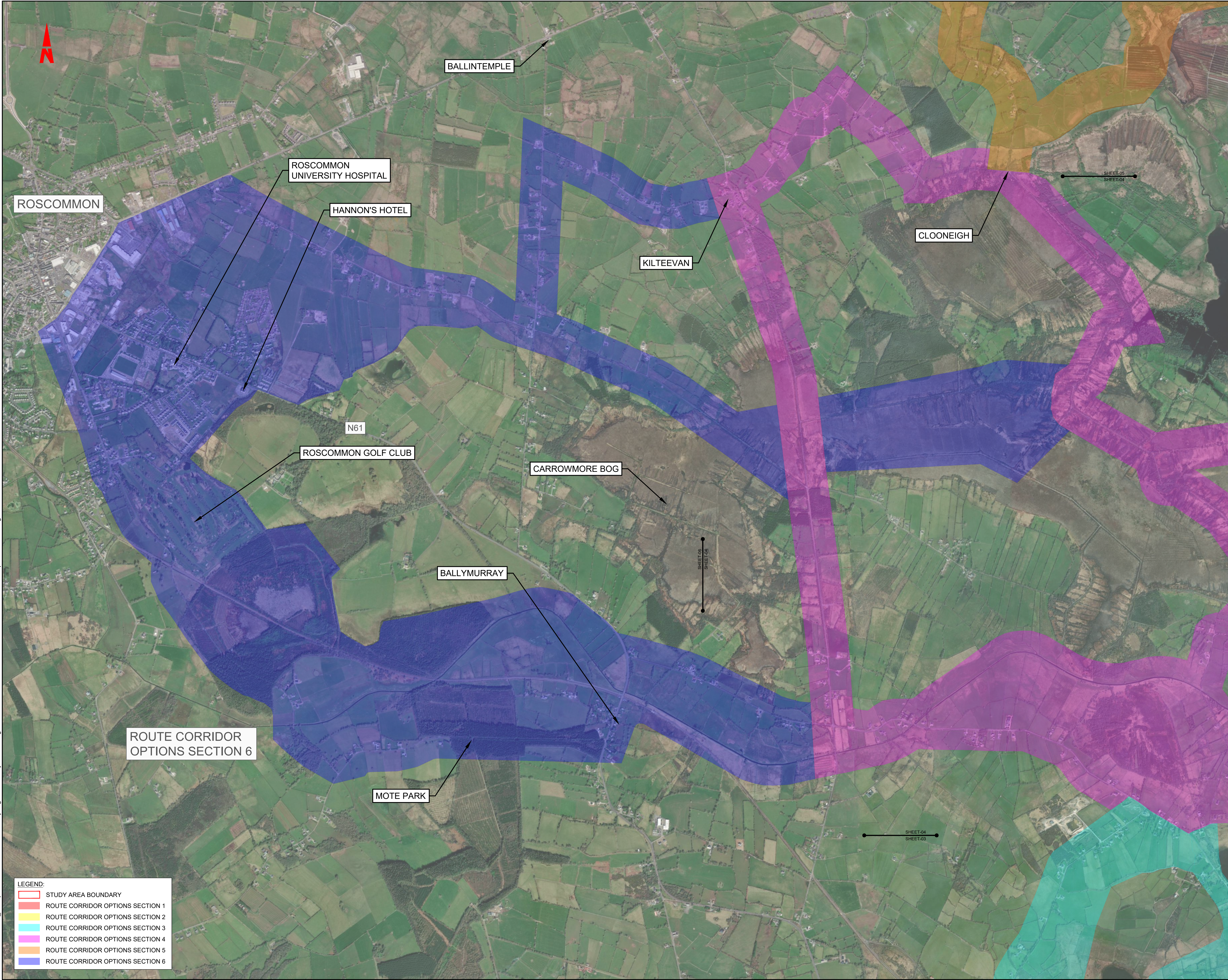
Title ROUTE CORRIDOR OPTIONS SECTIONS

Model File Identifier

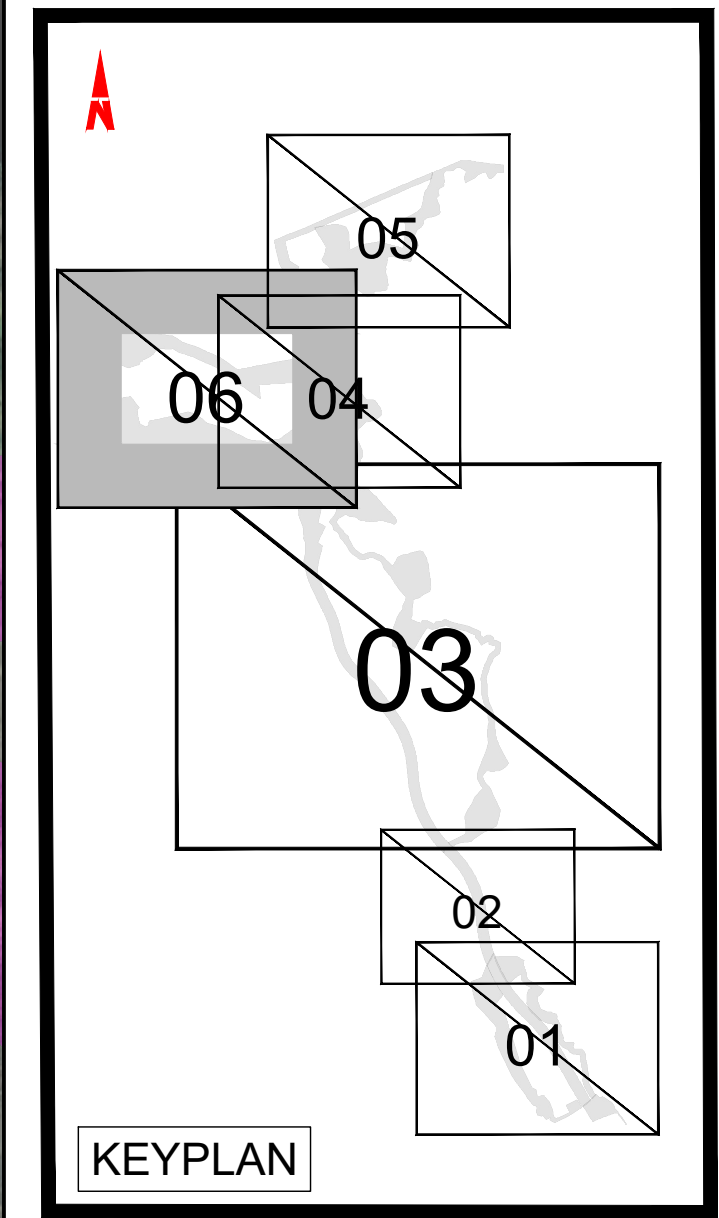
File Identifier IE000085-RPS-SK-XX-M2-CE-0001-05

Created on FEBRUARY 2025	Sheets 5 OF 6
--------------------------	---------------

Scale NTS @ A1 NTS @ A3	Status S3	Rev P02
-------------------------	-----------	---------



- General Notes
- (i) Hard copies, dwf and pdf will form a controlled issue of the drawing. All other formats (dwg etc.) are deemed to be an uncontrolled issue and any work carried out based on these files is at the recipients own risk. RPS will not accept any responsibility for any errors from the use of these files, either by human error by the recipient, listing of the un-dimensioned measurements, compatibility with the recipients software, and any errors arising when these files are used to aid the recipients drawing production, or setting out on site.
 - (ii) DO NOT SCALE, use figured dimensions only.
 - (iii) This drawing is the property of RPS, it is a project confidential classified document. It must not be copied used or its contents divulged without prior written consent. The needs and expectations of client and RPS must be considered when working with this drawing.
 - (iv) Information including topographical survey, geotechnical investigation and utility detail used in the design have been provided by others.
 - (v) All Levels refer to Ordnance Survey Datum, Malin Head.



P02	04.03.25	IF MC	FOR REVIEW AND COMMENT	AW	
P01	24.02.25	MC MC	FOR REVIEW AND COMMENT	AW	
Rev	Date	Dm CHK	Amendment / Issue	App	

Client



Comhairle Contae Ros Comáin
Roscommon County Council



A TETRA TECH COMPANY

Project LOUGH REE GREENWAY (ATHLONE TO BALLYLEAGUE / LANESBOROUGH / ROSCOMMON TOWN)
Title

ROUTE CORRIDOR OPTIONS SECTIONS

Model File Identifier		
File Identifier		
IE000085-RPS-SK-XX-M2-CE-0001-06		
Created on	Sheets	
FEBRUARY 2025	6 OF 6	
Scale	Status	Rev
NTS @ A1 NTS @ A3	S3	P02